

Welcome to Radyr Comprehensive School!



Respect - **C**ommitment - **S**uccess

Year 7 2020-2021

Name: _____ Form: _____

Form Teacher: _____

COVID – 19 Important Information

Due to the current climate, some of the information in this booklet may be subject to change. However, all information provided is in alignment with the school's standard policies and procedures, when fully operational.

Mr William's will email all parents in the last week of the school holidays with an update on exactly how students will start the school year.

Nevertheless, it is important that students and parents understand, all uniform and equipment listed in this booklet will be required for the start of term.

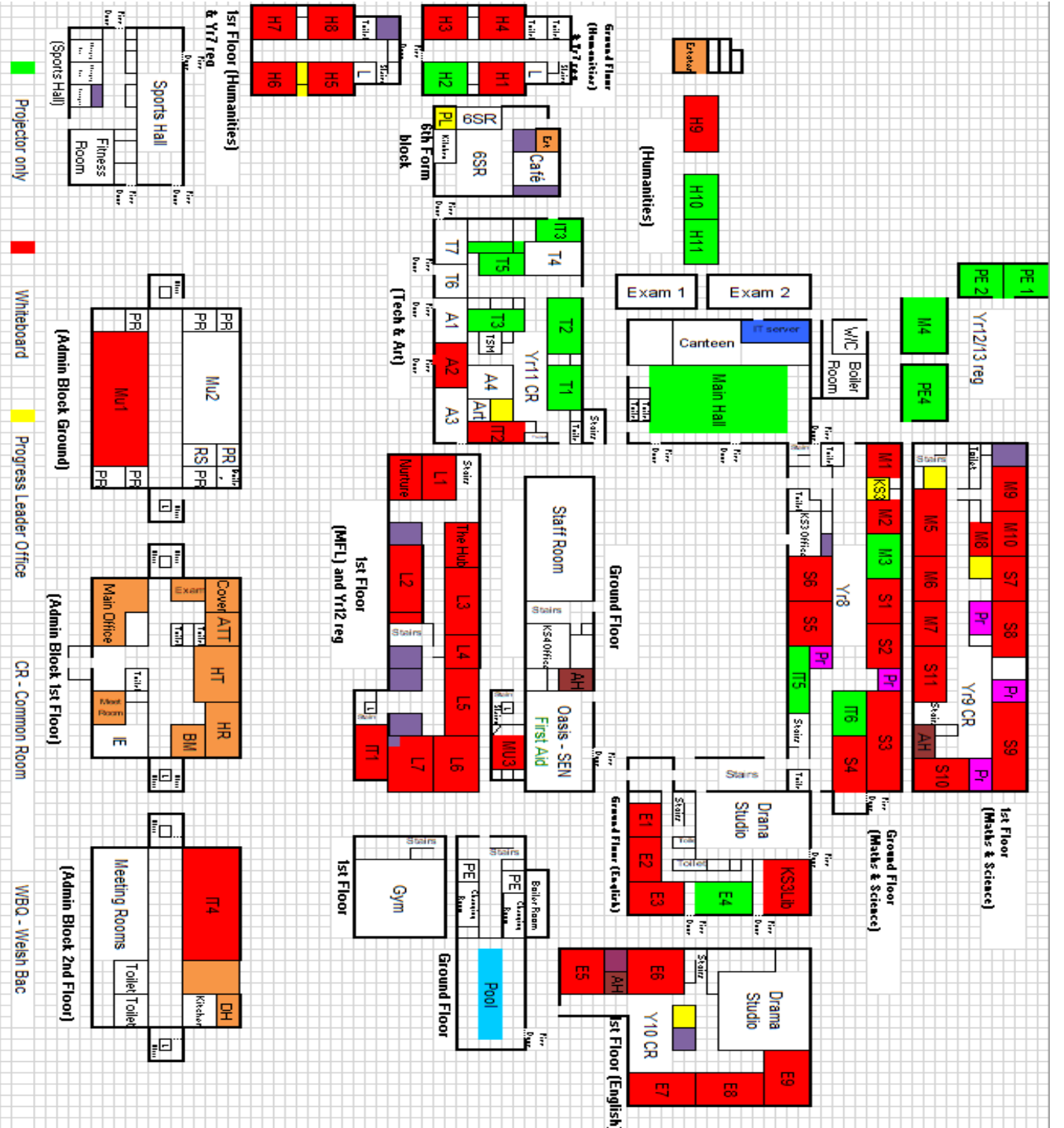
Contents

- Map
- Welcome
- Restorative Approaches in Radyr
- How do I get to school?
- What is our school uniform?
- What is the House System?
- Who's who?
- What do I bring to school?
- What should I not bring to school?
- What will happen on the first day?
- What is my 'timetable'?
- How do I use my planner?
- What will I learn?
- What is for lunch?
- What was the best thing about moving from Primary to Secondary school?
- Would you like some advice?
- Can you answer these questions?
- Notes page



**We are looking forward to welcoming you to
Radyr Comprehensive School**

The Year 7 area is H Block
 You will register in this building every day



Welcome to Radyr Comprehensive School

On behalf of all the staff and pupils at Radyr Comprehensive School, we would like to extend a warm welcome to all pupils joining us in September. The quality of the teaching and learning that takes place at Radyr is very important and we have developed a curriculum that will assist you in reaching your full potential. We have a dedicated Lower School pastoral team, led by Mr Gubb, Director of Lower School.

Pupils will be joining us from many different schools, some small, others large. Some of the schools will be sending us lots of pupils, others just one or two. This year we are having pupils from:

| | | |
|-------------------------------|-------------------------------|-------------------------------------|
| Gabalfa Primary School | Pentrebane Primary School | Herbert Thompson Primary School |
| Danescourt Primary School | Rhiwbeina Primary School | Llandaff City C/W Primary School |
| Peter Lea Primary School | Tongwynlais Primary School | St Mary's Primary School |
| Pentyrch Primary School | Creigiau Primary School | Gwaelod-Y-Garth Primary School |
| Radyr Primary School | Fairwater Primary School | Coryton Primary School |
| Holy Family Primary School | Radnor Primary School | Howell's Primary School |

You may have worries about joining secondary school. Will I be in a class with someone I know? What if I'm late for school? What if I forget my dinner money? What if I lose my way? Where do I catch the bus to go home? Hopefully, this little booklet will help to put your mind at rest.

Restorative Approaches

Restorative Approaches at Radyr

Radyr became a 'Restorative' school in September 2016 where all members of staff including the administration, canteen staff and cleaners were trained in 'Restorative Approaches'. At Radyr, 'Restorative Approaches' are already having a positive impact in terms of relationships and communication between pupils and staff.

A 'Restorative Approach' is based on an ethos of people working together to resolve conflict. It encourages a healthy attitude and promotes positive values that can be applied to all areas of life.

Applying a restorative attitude enables a more reflective community and aims to build, maintain and repair relationships. To be restorative means believing that decisions are best made and conflicts best resolved by the people most directly affected by them.

We have a dedicated Restorative room where pupils can go and speak with a trained member of staff.

How do I get to school?

Pupils travel to school in a variety of ways. If you live nearby i.e. Radyr, Danescourt and Fairwater, you tend to walk. There is a back entrance to the school that can be accessed via a path that can be found on Timothy Rees Close in Danescourt. If using this entrance, it is important to remember that it backs onto residential housing. **Remember, when coming to and from school you are representing the school and your behaviour reflects that of the school.**

There are school buses that come from Gwaelod-y-Garth, Pentyrch, Creigiau, Tongwynlais and Rhydlafer. If you come to school on one of these buses, you must have a bus pass. If you do not have one you will not be allowed on the bus. The bus drivers do check. If you forget your pass, there is a senior member of staff with a clip board in the bus bay area who can provide you with a temporary pass. At the end of the school day, the buses will be there to pick you up and take you home.

On your first day, Mrs Powell and Mr Gubb will be in the bus park and will help you get onto the right bus.

Buses leave the school at 3.15 p.m. What happens if you miss the bus? This rarely happens but if it does, report to the member of staff on duty. Parents are then usually contacted so that arrangements can be made to get you home.



You will need to check the times at which the bus gets to the bus stop. The bus will bring you to school by 8.25 a.m. Once you are in school, make your way to your form room in the 'H' Block.

If you come from further away, your parents may bring you to school. They can drive in through the lower school gates and drop you off in front just below the Sports Hall. Due to health and safety reasons, we close the school gates between 2:55 p.m. and 3:20 p.m. During that time, no cars are allowed on the school site. At 3:15 p.m. the buses will leave, followed by any cars.

What is our School Uniform?

School Uniform - General

The shirt, tie and school jumper are compulsory items of clothing and must be worn at all times

| Girls' Indoor Wear | Boys' Indoor Wear |
|--|---|
| Common throughout Years 7–13 <ul style="list-style-type: none">• Black skirt or trousers. Not permitted: Jeans or jean-type trousers, leggings, studded or skinny fit trousers, cords or cotton casual style trousers (whatever the colour)• White school shirt• *Radyr School tie <i>must be worn at all times</i>• Plain dark tights in a plain design must be worn at all times | Common throughout Years 7–13 <ul style="list-style-type: none">• Black Trousers• White school shirt• *Radyr School tie <i>must be worn at all times</i>• Plain dark socks |
| Year 7 & 8 <ul style="list-style-type: none">• *Maroon Jumper | Year 7 & 8 <ul style="list-style-type: none">• *Maroon Jumper |
| Year 9, 10 & 11 <ul style="list-style-type: none">• *Navy Jumper | Year 9, 10 & 11 <ul style="list-style-type: none">• *Navy Jumper |
| Year 12 & 13 <ul style="list-style-type: none">• White school shirt• *6th form school tie• *Blazer• *Grey 6th Form Jumper | Year 12 & 13 <ul style="list-style-type: none">• White school shirt• *6th form school tie• *Blazer• *Grey 6th Form Jumper |

**These items are available ONLY at YC Sports and are compulsory items to be worn. In the 6th Form, the blazer is compulsory but the jumper is optional. The only jumper that 6th Form students can wear is available from the suppliers above.*

All black shoes. If any logo or branding is visible, this needs to be black or blacked out.

Dark, plain coloured coat. Denim or leather jackets are not permitted. Hoodies are not permitted unless being worn for a trip or sporting event.

Items which should not be worn: jumpers, ties other than the one supplied by the School's authorised supplier; jewellery - no jewellery is allowed other than a watch and stud earring (no more than one in each earlobe); make-up and nail varnish.

In addition, parents should note that unnatural hair colouring and shaved motifs/hairstyles are not permitted.

School Uniform - Physical Education

| Girls | Boys |
|---|---|
| Common throughout Years 7–11 | Common throughout Years 7–11 |
| <ul style="list-style-type: none">• Maroon and sky-blue t-shirt with Radyr emblem• Maroon skort• Maroon and sky-blue rugby socks• Radyr navy footless tights or leggings – no motif• Training shoes – appropriate for running• Navy tracksuit bottoms with Radyr emblem• Radyr Comprehensive girls' blue swimming costume• Radyr sweatshirt ¾ zip mid layer• Maroon thermal base layer• Shin pads• Gum shield | <ul style="list-style-type: none">• Maroon and sky-blue t-shirt with Radyr emblem• Black rugby shorts• Maroon and sky-blue reversible rugby shirt• Training shoes – appropriate for running• Maroon and sky-blue rugby socks• Football boots• Navy tracksuit bottoms with Radyr emblem• Radyr Comprehensive boys' blue swimming shorts• Radyr sweatshirt ¾ zip mid layer• Maroon thermal base layer• Shin pads• Gum shield |

Uniform suppliers:

YC Sports

YC Sports
86-90 Crwys Road
Cathays, Cardiff
CF24 4NP
Phone: 02920237968

YC Sports
156 Cowbridge Road East
Canton, Cardiff
CF11 9ND
Phone: 02920220246

YC Sports(Schoolwear)
5 Penlline Road
Whitchurch, Cardiff
CF14 2AA
Phone: 02920693653

Open: Monday – Saturday 09.00 – 17.30



Joyell

5 Penlline Road
Whitchurch
Cardiff
CF14 2AA
02920 693653

Open: Monday – Saturday 09.30 – 17.00

What is the House System?

When you join us in September you will be put into one of three Houses. You will meet regularly as a House and compete throughout the year in a variety of events such as the Eisteddfod and Sports Day.

| House | Background |
|---|---|
| <p data-bbox="268 577 561 676"><u>Dwynwen</u> "Faith, Love, Charity"</p>  | <p data-bbox="679 577 1385 976">Welsh patron saint of love (the equivalent to St Valentine). We celebrate St Dwynwen's Day on 25th January. She fell in love with a prince her father didn't approve of. She ran away and met an angel. The angel gave Dwynwen 3 wishes (she wanted the Prince to be kept safe, never to marry and to help true lovers with their dreams). The Convent is in Anglesey. People still visit Dwynwen's church to see if they are in true love.</p> |
| <p data-bbox="197 1014 628 1113"><u>Llywelyn</u> "Unity, Courage and Conviction"</p>  | <p data-bbox="679 1014 1385 1368">Llywelyn was the Grandson of 'Llywelyn The Great'. Llywelyn fought for Welsh territory, a civil service and tax system. Edward I came to power in 1272 and soon invaded Wales and claimed territory. But Llywelyn did not give up! He battled to the death in December 1282. He was a courageous leader, with strong principles, who fought to unite Wales. 'Llywelyn, Our Last Leader'; Llywelyn, Ein Llyw Olaf.</p> |
| <p data-bbox="233 1402 593 1500"><u>Ifor Bach</u> "Passion, Tenacity, Belief"</p> | <p data-bbox="679 1402 1385 1843">Normans had conquered England and some parts of Wales. Ifor Bach held land in Senghenydd. He built a Castle on the site now occupied by Castell Coch. In 1158 William the Earl of Gloucester held Cardiff Castle. So the story goes that Ifor climbed the walls of The Keep of Cardiff Castle, kidnapped the Earl of Gloucester, his wife and their young son. He refused to release them. According to tradition, Ifor Bach's treasure is kept in a deep vault under Castell Coch.</p> |

Who's Who?

You will be joining Lower School. This is made up of three year groups, Year 7 Year 8 and Year 9. There are seven mixed ability forms in each year. Each of these forms has a Form Tutor. The Director of Lower School is Mr Gubb. There is also a Pastoral Progress Leader, Mrs Slade and an Academic Progress Leader, Miss Thomas. They are assisted by Lower School Wellbeing Officer, Mrs C Powell. Together, this pastoral team will help you make the best possible start to year 7.

In your Primary School, your class teacher would have got to know you really well. In Radyr, this may not be possible, as you have a variety of teachers for different subjects. Each teacher will teach in a different way. You may notice that some are stricter than others. Some will allow talking whilst others insist on silence. Some speak in loud voices whilst others are quiet, etc. Part of growing up is learning to adjust to new people and this may feel strange at first.

However, you will have more regular contact with one member of staff who will be your Form Tutor. He/she will be taking registration with you once a day.

| Form | Form Tutor | Room | Email |
|------|---------------|------|---------------------|
| 7N | Mrs L Jones | H04 | l.jones@radyr.net |
| 7S | Mrs A Knight | H03 | a.knight@radyr.net |
| 7E | Mrs L Bennett | H05 | l.bennett@radyr.net |
| 7W | Ms Perkins | H02 | r.perkins@radyr.net |
| 7NE | Mrs Fowler | H01 | c.fowler@radyr.net |
| 7NW | Mrs Hicks | H06 | j.hicks@radyr.net |
| 7SE | Mrs N Evans | H07 | n.evans1@radyr.net |

In the Pastoral Team, your Form Tutor will be the person with whom you will have the most contact. You will let your Form Tutor know if you are going to be away. They will also monitor your planners on a weekly basis. Most of the issues you may have can be dealt with through them. Parents can contact the Form Tutors through the School Planner or by email.

Your progress will be monitored by Mr Gubb - Director of Lower School.

He will be in charge of making sure you meet your potential by talking to your teachers and making sure that you are doing everything possible to succeed in your subjects.

Parents can contact Mr Gubb by phone on 029 20845100, or by email on:
m.gubb@radyr.net

In addition, within the Pastoral Team we have Ms Thomas - Academic Progress Leader (j.thomas@radyr.net) and Mrs Slade - Pastoral Progress Leader (k.slade@radyr.net).

Mrs Powell, our Lower School Wellbeing Officer, will work with individuals and small groups, helping them to address any problems they encounter whilst in school. These may include problems with relationships, peers, attendance or behaviour.

Parents can contact Mrs Powell by phone on 02920 845100, or by email:
cc.powell@radyr.net

There are teachers in Radyr whose job it is to help pupils that need additional support in some aspect(s) of their education. Miss J Howlett is one of the Assistant Head Teachers and our ALNCO. We have also talked to your Primary School and know quite a lot about your needs already. Miss Howlett can be contacted by telephone on 02920 845100 or by email: j.howlett@radyr.net

The following people are all very much involved in the day-to-day running of the school and you should know who they are and where their rooms are situated.

| | | |
|---|------------------------|-------------------------------------|
| Headteacher | Mr A D Williams | Administration Block |
| Deputy Head | Miss C Robins | Administration Block |
| Assistant Head - Curriculum & Assessment | Mr R Jenkins | First floor of English Block |
| Assistant Head - Wellbeing & Inclusion | Miss J Howlett | Oasis Centre |
| Assistant Head - Teaching & Learning | Mr O Wood | First floor of Science Block |

What do I bring to school?

You need to come to school prepared for the day ahead. You must bring your bus pass and money if you are topping up your account. We now have a fingerprint system which means that you have an online account that parents can put money onto so that you pay for your food by fingerprint. Login details will be given to students so that parents are able to top up the credit on accounts from home, helping to reduce queuing at break and lunch time. Although, you do have the option of bringing a packed lunch if you are not having school dinners. Snacks can also be bought at break time.

Get into the habit of packing your school bag the night before.

Your bag should contain:

- Books for the day
- School Planner
- Bottle of water
- (There are water fountains around school)



You should have a pencil case that contains the following:

- Scientific calculator (such as Casio FX83 range)
- Pens (black/blue ink and not 'gel pens')
- HB pencils
- Geometry set (to include protractor, compasses, set squares etc)
- Eraser
- Pencil sharpener
- Colouring pencils
- Glue stick
- Ruler

What should I not bring to school?

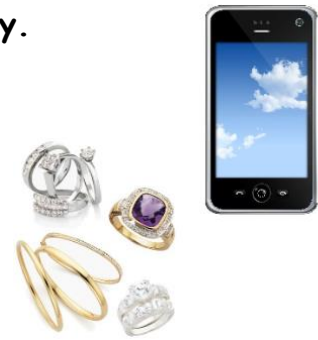
All pupils should be discouraged from bringing expensive items into school. Any mobile phones should be switched off. Pupils bring mobile phones to school at their own risk.

Our school is a friendly and safe place to be. However, sometimes things can get lost, broken or get in the way of learning. Whilst the latest technology is very impressive, unfortunately, like in society, there may be opportunities for thieves to take the things we treasure. Think for a moment how sad you would be if they got damaged or lost.

If you do choose to bring items such as a mobile phone, it is your responsibility. It must remain switched off during the day. If you are seen using it in lessons it will be confiscated.

You should not come to school wearing lots of jewellery (see uniform policy for clarification).

Our school rules state that you are allowed a watch and one stud earring in each earlobe.



What will happen on the first day?

On **Thursday 3rd September** you will arrive by **8.25 a.m.** and go to the Main Hall. Only Year 7, Year 11 and Year 12 will be in that day. Everybody else will start school on the following week. You will be met by Mr Gubb (Director of Lower School), Mrs Powell (Wellbeing Officer) and your Form Tutor. You will then be taken by your Form Tutor to your new form room.

You will get school planners and timetables. You will spend one hour with your Form Tutor. After this, you will begin your lessons. Your day will look like this:

| Time | What happens? |
|-------|--------------------------------------|
| 08.25 | 1st bell- get ready for registration |
| 08.30 | Registration |
| 08.55 | Period 1 |
| 09.55 | Period 2 |
| 10.55 | Break |
| 11.15 | Period 3 |
| 12.15 | Lunch |
| 13.05 | Period 4 |
| 14.05 | Period 5 |
| 15.05 | End of School Day |
| 15.15 | Buses leave |

On your second day, you will come to school by 8.25 a.m. On the first bell, you will go to the H Block. You will be in your registration room by 8.30 a.m. You will have the first hour with your Form Tutor when you can discuss your first day. You will then continue with normal lessons.

What's my timetable?

In your Primary School you probably have most of your lessons in one or two classrooms and the teachers come to you. At Radyr you will find that you have to go to a different room for more or less every lesson.

On your first day in September, along with your Planner, you will be given your timetable. You will notice that we work on a fortnightly timetable with Weeks A & B. The timetable will tell you what subjects you will be doing, when and where. It also tells you who your teacher will be.

| | 1 | 2 | 3 | 4 | 5 |
|-------------|---|--|---|---|---|
| MonA | Design Technology 7B1/Dt T06 Mr M Longville | Geography 7W/Gg H02 Mr W Daniels | Physical Education 7X4/Pe SH Mr N Stenner | English 7W/En E05 Ms P Williams | Art & Design 7W/Ar A01 Mrs C Hutchins |
| TueA | Music 7W/Mu MU3 Mrs R Power | Welsh 7W/We L06 Miss A M Williams | English 7W/En E05 Ms P Williams | Science 7W/Sc S08 Ms S Sheehan | Mathematics 7XY/Ma M10 Miss A Walker |
| WedA | Welsh 7W/We L06 Miss A M Williams | P.S.E. 7W/Se PE2 Mr E Fry | English 7W/En E05 Ms P Williams | Home Economics 7B1/He T01 Mrs C Miccoli | French 7W/Fr L01 Mrs C Bigsby |
| ThuA | Design Technology 7B1/Dt T07 Mr M Longville | French 7W/Fr L01 Mrs C Bigsby | Welsh 7W/We L06 Miss A M Williams | Physical Education 7X4/Pe Fitness Room Mr E Fry | Science 7W/Sc S08 Ms S Sheehan |
| FriA | Mathematics 7XY/Ma M10 Miss A Walker | Information Technology 7W/It IT3 Mr R Brockway | Physical Education 7X4/Pe Fitness Room Mr E Fry | History 7W/Hi H01 Mr M Bayley | Science 7W/Sc S08 Ms S Sheehan |

You can see that this pupil is in 7W. This is the Week A timetable. Who do they have on Friday A Period 4?

How do I use my planner?

You will record different things in your planner, such as homework, behaviour and achievement. It allows parents and teachers to monitor your progress. You **must** look after it. Do not spoil it with graffiti, or you will be expected to buy another.

Check your Planner every evening and make sure you have your pencil case, the right books, any homework that is due in and the right kit / equipment for each lesson! Remember to get your planner signed by a parent or carer at the weekend.

| Week B | | Week Beginning: 10 th September 2018 | | |
|--------|---------|---|-------|------|
| | Subject | Homework Details | Date | Done |
| Monday | Maths | Complete 5 questions | 15/9 | ✓ |
| | Geog | Worksheet in exercise book | 20/9 | |
| | French | Learn 10 vocab words | 14/9 | |
| | P.E. | none set | - | - |
| | Art | Continue project work | 20/10 | |

What will I learn?

A 'Curriculum Letter' is sent out at the beginning of each academic year. This will give you and your parents an idea of what is being taught in subject lessons during the year. It also gives parents some guidance on how they can help you with homework and how you will be assessed throughout the terms.

The subjects you will be studying are: Art, Drama, English, French, Geography, Humanities, Information Technology, Mathematics, Personal and Social Education, Physical Education, Science, Technology and Welsh.

You will soon realise that there are many different ways to learn. Most of your lessons will take place in a classroom. However you will soon be using different types of classroom such as laboratories, workshops, the Sports Hall, swimming pool etc. Learning will take place both indoors and outdoors.

You are very lucky to be joining a school that gives you a choice of lots of clubs and activities to join. Activities take place during the lunch hour and after school and include sports clubs, music, drama, culture club, science, poetry and art, to name but a few.

We have Year Councils, a Pupil Parliament, Charity Committees, Eco Clubs, Homework Clubs, opportunities to become Transition Ambassadors, House reps, and we run many trips across Great Britain and abroad (China, Spain, France, Canada, Germany, Vietnam).

What's for lunch?

Sample Menu ~ Prices correct as of January 2020



STUDENT PRICE LIST

Any starred item can be purchased individually or upgraded to a Meal Deal at £2.95 and includes an item from our homemade bakery OR an item of fruit & a bottle of chilled Welsh water

| | | |
|--|--|--|
| <h3 style="background-color: #2c3e50; color: white; padding: 2px 5px; border-radius: 5px;">Breakfast</h3> <p>See breakfast menu boards. <i>Where available.</i></p> <hr style="border: 1px solid #2c3e50;"/> <h3 style="background-color: #2c3e50; color: white; padding: 2px 5px; border-radius: 5px;">Meat Of The Day - £2.95</h3> <p>A homemade, freshly prepared meal of the day. Served with side orders & a bottle of chilled Welsh water. *See posters for today's options.</p> <hr style="border: 1px solid #2c3e50;"/> <h3 style="background-color: #2c3e50; color: white; padding: 2px 5px; border-radius: 5px;">Grab Bag</h3> <p>Option A: £2.95 ½ baguette, fruit & homemade bakery item & a bottle of chilled Welsh water</p> <p>Option B: £2.40 *Where available ½ baguette, fruit & a bottle of chilled Welsh water.</p> <hr style="border: 1px solid #2c3e50;"/> <h3 style="background-color: #2c3e50; color: white; padding: 2px 5px; border-radius: 5px;">Tffre2Go Street Food ★</h3> <p>A street food themed Grab & Go option. Boxed meal £2.50 *See posters for today's option</p> <hr style="border: 1px solid #2c3e50;"/> <h3 style="background-color: #2c3e50; color: white; padding: 2px 5px; border-radius: 5px;">Salads ★</h3> <ul style="list-style-type: none"> ● Pasta layered salad £2.40 ● Premium chicken salad £2.60 ● See seasonal promotional posters <hr style="border: 1px solid #2c3e50;"/> <h3 style="background-color: #2c3e50; color: white; padding: 2px 5px; border-radius: 5px;">Pasta Pot - £2.10 ★</h3> <p>A healthy and filling range of pasta & sauce.</p> <ul style="list-style-type: none"> ● Add garlic bread £0.27 <i>(Garlic bread is included in meal deal)</i> | <h3 style="background-color: #2c3e50; color: white; padding: 2px 5px; border-radius: 5px;">Jacket Potato ★</h3> <p>Oven baked & full of goodness & served with a salad garnish.</p> <ul style="list-style-type: none"> ● Plain jacket potato £1.05 ● Filled potato £2.40 ● Beans & cheese ● Cheese & coleslaw ● Tuna mayo & cheese <hr style="border: 1px solid #2c3e50;"/> <h3 style="background-color: #2c3e50; color: white; padding: 2px 5px; border-radius: 5px;">Soup (Seasonal) ★</h3> <p>Fresh, hot, wholesome & healthy.</p> <ul style="list-style-type: none"> ● Bowl of soup £1.35 ● Freshly baked bread roll £0.27 ● Flora butter portion £0.22 <p><i>(Bread roll is included in meal deal)</i></p> <hr style="border: 1px solid #2c3e50;"/> <h3 style="background-color: #2c3e50; color: white; padding: 2px 5px; border-radius: 5px;">Sandwiches, Baguettes & Wraps</h3> <ul style="list-style-type: none"> ● Standard sandwich £1.97 ● Premium sandwich £2.07 ● Toasted sandwich £2.07 ● ½ a filled baguette £1.30 ● Filled baguette £2.60 ● Filled wrap £2.40 ● Deli sub £2.60 ● ½ panini £1.30 ● Panini £2.60 <hr style="border: 1px solid #2c3e50;"/> <h3 style="background-color: #2c3e50; color: white; padding: 2px 5px; border-radius: 5px;">Savouries</h3> <ul style="list-style-type: none"> ● Toast slice £0.37 ● Toasted bagel £0.78 ● Bacon OR sausage bap £1.45 ● Bacon OR sausage bagel £1.66 ● Cheese & onion pasty £1.45 ● Bacon & cheese turnover £1.50 ● SUB 350 £1.55 ● Pizza slice/calzone £1.45 ● Chicken/Quorn burger £1.45 ● Chicken/Quorn burger with cheese £1.60 ● Cheese on toast £1.05 | <h3 style="background-color: #2c3e50; color: white; padding: 2px 5px; border-radius: 5px;">Sides</h3> <ul style="list-style-type: none"> ● Sauce portion £0.11 ● Jam portion £0.16 ● Grated cheese (30g) £0.80 ● Baked beans £0.80 ● Curry sauce £0.41 ● Pasta/rice £1.05 ● Vegetables of the day £0.54 ● Potato portion £1.76 ● Side salad £0.93 <hr style="border: 1px solid #2c3e50;"/> <h3 style="background-color: #2c3e50; color: white; padding: 2px 5px; border-radius: 5px;">Bakery</h3> <ul style="list-style-type: none"> ● Homemade cookie £0.95 ● Homemade cakes, muffins & flapjacks £1.05 ● Homemade dessert & custard £0.85 ● Branded mini muffins £0.52 ● Branded cookies, muffins & flapjacks £1.15 <hr style="border: 1px solid #2c3e50;"/> <h3 style="background-color: #2c3e50; color: white; padding: 2px 5px; border-radius: 5px;">Fruit & Yogurts</h3> <ul style="list-style-type: none"> ● Fresh fruit item £0.40 ● Fresh fruit bag £0.45 ● Fresh fruit salad £1.05 ● Fruit & yogurt crunch £1.25 ● Muller yogurt £0.62 ● Frozen yogurt pot £0.83 ● Frozen yogurt cone £0.62 <hr style="border: 1px solid #2c3e50;"/> <h3 style="background-color: #2c3e50; color: white; padding: 2px 5px; border-radius: 5px;">Hot Drinks £1.15</h3> <p>Made with our own blend of Fairtrade coffee. (where available)</p> <ul style="list-style-type: none"> <li style="width: 50%;">● Americano <li style="width: 50%;">● Mocha <li style="width: 50%;">● Café latte <li style="width: 50%;">● Hot chocolate <li style="width: 50%;">● Cappuccino <li style="width: 50%;">● Tea £0.78 <hr style="border: 1px solid #2c3e50;"/> <h3 style="background-color: #2c3e50; color: white; padding: 2px 5px; border-radius: 5px;">Cold Drinks</h3> <ul style="list-style-type: none"> ● Frozen jubbly £0.52 ● Milk carton £0.67 ● Fairtrade juice 200ml £0.67 ● Fairtrade juice 500ml £1.25 ● Aqua 67 £0.80 ● Welsh bottled water £0.80 ● Radnor Fizz £0.90 ● Mambo £0.90 ● Yazoo milkshake £1.35 ● Smoothie/frappe £1.20 ● 50% fruit squash £0.41 |
|--|--|--|

ParentPay – Cashless Catering and Payment System

The School operates a biometric cashless online school meals payment system. This system allows pupils to purchase meals and snacks by simply presenting their fingerprint at the till rather than using cash.

Our aim is to remove cash from schools and therefore the preferred payment method is using the ParentPay website.

The advantages of using ParentPay are:

- It enables you to pay for meals online;
- It offers a highly secure payment system;
- It provides parents with a history of all payments made to the school;
- It allows parents to create a single account login for all their children who attend the school;
- It highlights all items requiring payment relevant to each child;
- It emails a receipt of payment to the email address registered;
- It offers parents the ability to set automated emails and SMS Payment reminders.

To activate your account you will need to log on to www.parentpay.com.

Click on the activation link and enter the details that will be provided to you by the school on the first day of the new term. If your child wishes to purchase lunch on the first day then they will be able to place money on their account manually using the onsite top up machine.

When registering you will create a username and password which only you will know. It is important that you keep this information safe. If you have more than one child in the school, you can manage funds for them all from one account.

As an alternative to using the website, parents can directly top-up accounts by using cash at their local PayPoint outlet. For those parents/guardians who wish to pay by PayPoint please contact the school office as soon as possible. Please note it takes up to 48 hours for PayPoint payments to be processed. (Payments via the ParentPay website are processed straight away.)

Accounts can also be topped up with cash by pupils using the facility in the school hall. Please keep a close eye on the balance, ensuring that enough money is available for each child.

If you have any questions about the payment system, then please contact the Finance Team.

Attendance

The purpose of this information is to re-enforce Local Authority and Welsh Government guidelines on pupils achieving above **95%** school attendance. These guidelines are outlined below:

Expectations for Attendance

| Expectations For Attendance | |
|-----------------------------|-----------------------------------|
| 100% - 98% | Excellent attendance |
| 97.9% - 95% | Expected attendance |
| 94.9% - 90% | Risk of underachievement |
| 89.9% - 85% | Serious risk of under achievement |
| Below 85% | Extreme risk of under achievement |

The impact of non-attendance can be seen from the table below, which illustrates the time absent from school and how it relates to the percentage attendance recorded and classes missed.

Attendance over a year, what does it equal in days and classes missed?

| Attendance over a year, what does it equal in days and classes missed? | | |
|--|----------------|--------------|
| 98% | 4 days absent | 20 classes |
| 95% | 10 days absent | 50 classes |
| 90% | 20 days absent | 100 classes! |
| 85% | 27 days absent | 145 classes! |
| 80% | 37 days absent | 185 classes! |

Here at Radyr Comprehensive we will be utilising **Fixed Penalty Notices (FNPs)** from September as a method of monitoring an improving student attendance. In some circumstances, the school may request that the Education Welfare Service issue parents/carers with a Fixed Penalty Notice under The Education (Penalty Notices) (Wales) Regulations 2013. A warning letter will first be sent if:

- There have been 10 unauthorised sessions within one school term;
- A child has been late (after registration has closed) on 10 occasions within one school term;
- Parents/carers have failed to engage in attempts to improve and sustain attendance;
- The police have regularly found a pupil to be absent from school without an acceptable reason.

A Fixed Penalty Notice will be issued if:

- There is one further unauthorised absence within 15 school days of a warning letter having been issued. School have the right to request medical evidence to ensure absences are only authorised, where appropriate, in cases where attendance is a concern.
- An unauthorised holiday of 5 days and over is taken during term time (note that no warning letter will be issued). A holiday will not be authorised if a request form has not been submitted in advance of the holiday. The Radyr Cluster Schools will take account of the 'Factors for Consideration' on the request form. Each Headteacher will take into account the child's attendance record for the previous 3 full terms. If attendance falls below 98% and the Headteacher has taken into account all factors for consideration then the Headteacher will request a FPN.

For all communication regarding your child's attendance, current or future please email attendance@radyr.net

What is the best thing about moving from Primary to Secondary school?

We always listen to the views of our pupils. You may have the opportunity to get involved in the Pupil Parliament, the interview process for new members of staff and departmental subject reviews. Your opinions are important, so what better way to finish this booklet than some of the best advice possible. The following statements have been given by previous Year 7 pupils.

The Canteen food is more varied.

More things to do in PE.

The best thing was making new friends.

Having practical lessons like D&T, PE and Science.

All the clubs to go to.

Having different teachers for different lessons and school meals.

You get a lot more responsibility because you have to find the correct rooms!

You get to cook and make amazing things in Technology. In Science you use acids and alkaline.

Teachers trust you to move around the school. They treat you like an adult rather

You could make more friends from different schools.

You have different teachers for different subjects.

You are not stuck in one classroom all day, you get to move around.

Would you like some advice?

Here is what our current pupils wanted to say about starting in September.

- *Don't worry about coming - it's fun and exciting.*
- *Pack your bag the night before so you're not rushing in the morning, get organised.*
- *Mix with other people and you will be ok.*
- *Don't be afraid to talk to other people - they are just as scared as you are.*
- *You get more homework than primary - it's not as bad as you think! Just make sure you understand what is needed.*
- *Try not to worry about making friends or getting lost.*
- *The school is not that hard to find your way around.*
- *If you miss a homework you get detention - so don't miss it!*
- *Always be in lessons on time.*
- *Don't worry and be yourself, don't 'blend in' with the crowd - if you have an opinion don't be afraid to show it.*
- *Don't be scared; there is nothing to be afraid of. Keep cool, calm and collected, go with the flow, enjoy yourself, be nice to everyone, be happy and stay out of trouble.*
- *Remember where you came from and where you are going.*
- *Don't be a bully as that will put you in a bad position.*
- *I was surprised by the atmosphere. Everyone smiles at you and they are kind to you.*
- *Don't worry if you are split up from your Primary School friends. You will soon make others and you will see them at breaks and lunch.*
- *If you're nice to people then people will be nice to you.*
- *Don't be scared just go and try everything.*
- *Your first year will go so fast. I can't believe we've nearly finished Year 7!*
- *Don't be afraid of making new friends.*
- *Try your best in every subject from the start of the year to the finish, as reports are written and can't be changed.*
- *My best advice is to make a good impression at the beginning of the year.*
- *Be yourself and don't try and change if someone doesn't like you.*

Would you like some advice?

Some questions have deliberately been left unanswered. When you can supply the solutions to the following questions you are really getting to know Radyr.

1. What House are you in? What is the story behind the name?
2. What areas may Year 7 use during breaks and lunch-times?
3. What and where is the red gra?
4. Which lesson rooms could be especially dangerous unless behaviour is very orderly and sensible?

If, by half term, you still don't know the answers to any of these questions please come and ask your Form Tutor, Mr Gubb or Mrs Powell.

Word Search

| | | | | | | | | | |
|---|---|---|---|---|---|---|---|---|---|
| T | A | H | E | P | G | O | F | U | D |
| H | R | C | M | N | E | T | P | L | W |
| O | R | A | Y | C | L | Z | A | L | Y |
| U | A | B | S | M | E | Q | H | Y | N |
| S | A | R | K | I | R | H | V | W | W |
| E | T | O | I | S | T | D | J | E | E |
| R | A | F | L | Y | L | I | F | L | N |
| V | N | I | L | C | X | B | O | Y | J |
| U | A | I | S | L | E | A | R | N | M |
| R | A | D | Y | R | I | B | M | E | W |

1.FORM

2.HOUSE

3.IFOR BACH

4.LLYWELYN

5.DWYNWEN

6.RADYR

7.LEARN

8.SKILLS

Can you find the mystery word?

